

PRODUCT NEWS 2023



OIL FILTERS

SOFIMA REF

MAIN APPLICATIONS

MAIN CROSS REFERENCES

S 1644 R



MAXUS (SAIC GROUP): Deliver 9

MAXUS (SAIC GROUP) C00308847, P01051
UFI 23.644.01

S 1VCC PE



VOLVO: S60 - XC40 - XC60 - XC90

VOLVO 32257032
UFI 25.VCC.01

S 3651 R



ISUZU: Bighorn - D-Max - Rodeo - Trooper II
OPEL: Monterey B
VAUXHALL: Monterey MK

GENERAL MOTORS 97167972
ISUZU 8-97167972-0, 8973587200, 97358720
OPEL (GM) 650304
BOSCH F026407304, P7304
HENGST H834W
KNECHT-MAHLE OC584
MANN+HUMMEL W8018
UFI 23.651.00

OIL FILTERS

SOFIMA REF

MAIN APPLICATIONS

MAIN CROSS REFERENCES

S 3653 R



ASIA MOTORS: Rocsta
KIA: Besta - Sportage

KIA 0RF03-23-802A, 0RF03-23-802B
COOPERSFIAAM FT5447
FRAM PH6811
HENGST H13W01
KNECHT-MAHLE OC1254, OC1673
MANN+HUMMEL W811/80
PURFLUX LS489A
TECNOCAR R96
UFI 23.653.00

S 3668 R



TOYOTA: Etios

TOYOTA 90915-TA005, 90915-TA005-82
FRAM PH11447
KNECHT-MAHLE OC1448
MANN+HUMMEL W6020
UFI 23.668.00

S 3730 R



FORD: C-Max - Fiesta - Focus - Grand C-Max
- Kuga - Puma - Tourneo Connect

FORD H6BG-6714-BA, 2207993
BOSCH F026407279, P7279
COOPERSFIAAM FT6828
FRAM PH12415
HENGST H420W
KNECHT-MAHLE OC1565
MANN+HUMMEL W7057
PURFLUX LS1130
TECNOCAR R1061
UFI 23.730.00

OIL FILTERS

SOFIMA REF

MAIN APPLICATIONS

MAIN CROSS REFERENCES

S 3739 R



FORD: Tourneo Custom - Transit Custom -
Transit MY.2014

FORD 2007929, GK2Q-6714-AA
BOSCH F026407245, P7245
COOPERSFIAAM FT6734
FRAM PH12177
HENGST H14W43
KNECHT-MAHLE OC1414
MANN+HUMMEL W7034
PURFLUX LS1081
TECNOCAR R1035
UFI 23.739.00

S 3752 R



CITROËN: C4 - C5 - Dispatch III - Jumper III -
Relay III - SpaceTourer
FIAT: Ducato (MY.2019) - Scudo (506)
OPEL: Movano C - Vivaro C - Zafira Life
PEUGEOT: 508 II - Boxer III - Expert III -
Traveller
TOYOTA: ProAce
VAUXHALL: Movano Mk3 - Vivaro C - Vivaro
Life

CITROËN 9809532380
PEUGEOT 9809532380
TOYOTA SU001-A4322
BOSCH F026407268, P7268
COOPERSFIAAM FT6735
FRAM PH12221
HENGST H388W
KNECHT-MAHLE OC1397
MANN+HUMMEL W7063
PURFLUX LS995
TECNOCAR R1036
UFI 23.752.00

S 3759 R



SUZUKI: Celerio - Ignis III - Swift V

SUZUKI 16510-84M00, 16510-84M00-000,
1651084MA0, 1651084MA0000
BOSCH P7050, F026407050
HENGST H347W
KNECHT-MAHLE OC1570
MANN+HUMMEL W6026
UFI 23.759.00

OIL FILTERS

SOFIMA REF

MAIN APPLICATIONS

MAIN CROSS REFERENCES

S 5231 PE



ALFA ROMEO: Giulia (952) - Stelvio (949)

FIAT 73504459
UFI 25.231.00

S 5232 PE



BMW: 2 (F87) - 3 (F80) - 4 (F82) - 4 (F83)

BMW 11427854049, 11427854445
BOSCH 1457429269, P9269
COOPERSFIAAM FA5772ECO
FRAM CH10075ECO
HENGST E61HD215
KNECHT-MAHLE OX387D
MANN+HUMMEL HU8011Z
PURFLUX L376
TECNOCAR OP268
UFI 25.232.00

S 5283 PE



OPEL: Signum - Vectra C
RENAULT: Espace IV - Grand Espace IV - Vel
Satis
VAUXHALL: Signum - Vectra C

GENERAL MOTORS 97387426, 98012822
ISUZU 8-97387426-0
OPEL (GM) 5650820, 5650836
RENAULT 7701477041
SAAB 98012822
HENGST E837HD328
UFI 25.283.00

OIL FILTERS

SOFIMA REF

MAIN APPLICATIONS

MAIN CROSS REFERENCES

S 5284 PE



AUDI: A8 - SQ7 - SQ8
BENTLEY: Bentayga
PORSCHE: Panamera
VOLKSWAGEN: Touareg

PORSCHE 9A7.198.405.10
VAG 057115561S, 057198405D
BOSCH F026407273, P7273
COOPERSFIAAM FA6783ECO
FRAM CH12118ECO
HENGST E900HD431
MANN+HUMMEL HU9011z
PURFLUX L1037
TECNOCAR OP1033
UFI 25.284.00

S 5285 PE



ALFA ROMEO: Giulia (952) - Stelvio (949)

ALFA ROMEO 670050200, 670050201,
670051032
CHRYSLER 68335191AA
PURFLUX L1063
UFI 25.285.00

S 5288 PE



DS AUTOMOBILES: DS 9

CITROËN 9807989080
UFI 25.288.00

OIL FILTERS

SOFIMA REF

MAIN APPLICATIONS

MAIN CROSS REFERENCES

S 5290 PE



JAGUAR: F-Pace

LAND ROVER: Defender - Discovery 5 -
Range Rover IV - Range Rover Sport II - Range
Rover Sport III - Range Rover V - Range Rover
Velar

JAGUAR T2R47312

LAND ROVER LR133455

COOPERSFIAAM FA6875ECO

FRAM CH12629ECO

HENGST E1004HD672

KNECHT-MAHLE OX1338D

PURFLUX L1065

UFI 25.290.00

FUEL FILTERS

SOFIMA REF

MAIN APPLICATIONS

MAIN CROSS REFERENCES

S 1A33 B



BMW: 2 Coupè - 3 - 3 Touring - 4 Coupè - 4 Cabrio - 4 Gran Coupè - 5 - 5 Touring - 6 Gran Turismo - 7 - 8 - X3 - X4 - X5 - X6 - X7

BMW 13328582008, 13328582272, 13328591018, 13328591019
BOSCH F026402358, N2358
HENGST H600WK
KNECHT-MAHLE KL872/7
MANN+HUMMEL WK5017
UFI 31.A33.00

S 1A36 B



MERCEDES BENZ: C Classe (W/S205)

MERCEDES BENZ 0000902552, 6260900452, A0000902552, A6260900452
BOSCH F026402863, N2863
HENGST H472WK
KNECHT-MAHLE KL169/6D
MANN+HUMMEL WK5016Z
UFI 31.A36.00

S 1A38 B



AUDI: A6 (4A_/C8) - A7 (4K) - A8 (4N)
PORSCHE: Panamera

PORSCHE 971.127.401.A
VAG 4N0127401A
HENGST H554WK
MANN+HUMMEL WK7012
UFI 31.A38.00

FUEL FILTERS

SOFIMA REF

MAIN APPLICATIONS

MAIN CROSS REFERENCES

S 2080 NE



OPEL: Signum - Vectra C
RENAULT: Espace IV - Grand Espace IV - Vel Satis
VAUXHALL: Signum - Vectra C

GENERAL MOTORS 97387426, 98012822
ISUZU 8-97387426-0
OPEL (GM) 5650820, 5650836
RENAULT 7701477041
SAAB 98012822
HENGST E837HD328
UFI 25.283.00

S 2E2X NE



CHEVROLET: Equinox - Express Van
GMC: Savana - Terrain
OPEL: Insignia B - Insignia B Country Tourer - Insignia B Sports Tourer
VAUXHALL: Insignia Country Tourer Mk2 - Insignia Mk2 - Insignia Sports Tourer Mk2

GENERAL MOTORS 23153963, 84186990, 84428486, 87847140
BOSCH F026402287, N2287
KNECHT-MAHLE KX567D
MANN+HUMMEL PU10027/1z, PU10027Z
UFI 26.E2X.02

S 4163 NR



FORD TRUCKS: F-Max Serie

FORD GC46-9176-CA
UFI 24.163.00

FUEL FILTERS

SOFIMA REF

MAIN APPLICATIONS

MAIN CROSS REFERENCES

S 4166 NR



FORD TRUCKS: Cargo 1842 T - Cargo 3542 D
- Cargo 4142 D - Cargo 4142 M - Cargo 4142
P - F-Max Serie

FORD GC46-9176-AC
UFI 24.166.00

S 4530 NR



FORD: Focus - Kuga

FORD JX61-9155-AA, JX61-9155-AB,
JX61-9155-AC, JX61-9155-AD, JX61-9155-
AE, 2210512, 2229478, 2362319, 2571667,
2596971
BOSCH F026402280, N2280
MANN+HUMMEL WK11024
UFI 24.530.00

S 4A24 NR



MERCEDES BENZ: E Classe (S/W211) - G
Classe (W463) - M Classe (W163) - S Classe
(V/W220)

MERCEDES BENZ 6280920001, 6280920101,
A6280920001, A6280920101
BOSCH 0450906464, N6464
COOPERSFIAAM FP6094
FRAM P11460
HENGST H136WK
KNECHT-MAHLE KL155/1
MANN+HUMMEL WK822/3
PURFLUX FCS820
TECNOCAR RN522
UFI 24.A24.00

FUEL FILTERS

SOFIMA REF

MAIN APPLICATIONS

MAIN CROSS REFERENCES

S 6140 NE

HYUNDAI: Tucson III
KIA: Sportage V

HYUNDAI 31920-N7800, 31922-N7800
UFI 26.140.00



S 6195 NE

CITROËN: Dispatch - Jumpy - SpaceTourer
OPEL: Vivaro C - Zafira Life
PEUGEOT: Expert - Traveller
TOYOTA: ProAce
VAUXHALL: Vivaro C - Vivaro Life

PEUGEOT 9817256080
TOYOTA SU001A7932
BOSCH F026402281, N2281
COOPERSFIAAM FA6941ECO
FRAM C12532
HENGST E512KPD572
KNECHT-MAHLE KX652D
PURFLUX C622
TECNOCAR N651
UFI 26.195.00



S 6199 NE

MAXUS (SAIC GROUP): Deliver 9

MAXUS (SAIC GROUP) 190916, C00112937
UFI 26.199.00



FUEL FILTERS

SOFIMA REF

MAIN APPLICATIONS

MAIN CROSS REFERENCES

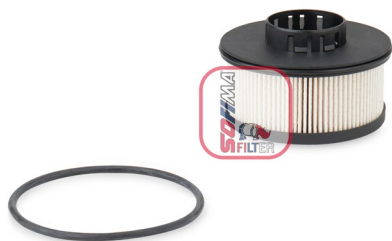
S 6200 NE



HYUNDAI: Santa Fe IV
KIA: Carnival - Sorento IV

HYUNDAI: 31920P2900
UFI 26.200.00

S 6201 NE



CITROËN: Berlingo III - C-Elysée - C3 Aircross - C3 III - C4 Cactus - C4 Grand Space Tourer - C4 III - C4 Space Tourer - C4 X - C5 Aircross
DS AUTOMOBILES: DS3 - DS4 - DS7
FIAT: Doblò
OPEL: Astra L - Combo E - Corsa F - Crossland - Grandland - Mokka B
PEUGEOT: 2008 - 2008 II - 208 - 208 II - 3008 II - 301 - 308 II - 308 III - 5008 II - 508 II - Partner III - Rifter
VAUXHALL: Astra Mk8 - Combo E - Corsa Mk5 - Crossland X - Grandland - Mokka Mk2

GENERAL MOTORS 3559103, 3559106, 3649347, 93479473
PEUGEOT 9816182880, 9816183080, 9816847180, 9816847280, 9820226380
TOYOTA SU001A9660, SU001B0431, SU001B1799
BOSCH F026402359, N2359
COOPERSFIAAM FA6806ECO
FRAM C12282
HENGST E495KPD534
PURFLUX C875
TECNOCAR N636
UFI 26.201.00

S H2O6 NE



FIAT: Ducato (MY.2019)

FIAT 77369138
UFI 26.H2O.06

AIR FILTERS

SOFIMA REF

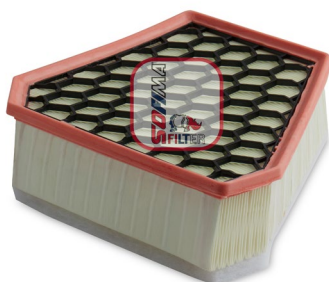
MAIN APPLICATIONS

MAIN CROSS REFERENCES

S 3A19 A

FIAT: Ducato (MY.2019)

FIAT 1395975080
MANN+HUMMEL C26065
UFI 30.A19.00



S 3B58 A

DODGE: Journey

FIAT: Freemont

CHRYSLER 04891916AA, 53119599

FIAT K04891916AA
BOSCH F026400518, S0518
FRAM CA10516
KNECHT-MAHLE LX4366
MANN+HUMMEL C24032
UFI 30.B58.00



S 3C69 A

CHRYSLER: Grand Voyager - Sebring -
Sebring Convertible - Town & Country

CHRYSLER 04891713AA, 4891713AA,
4891713AB

FIAT K04891713AA, K04891713AB
BOSCH 1987429194, S9194
HENGST E617L
KNECHT-MAHLE LX1288
UFI 30.C69.00



AIR FILTERS

SOFIMA REF

MAIN APPLICATIONS

MAIN CROSS REFERENCES

S 3C74 A



OPEL: Insigna B - Insigna B Country Tourer - Insigna B Sports Tourer
VAUXHALL: Insigna Country Tourer - Insigna Mk2 - Insigna Sports Tourer Mk2

GENERAL MOTORS 23430313
BOSCH S0685, F026400685
COOPERSFIAAM PA7898
FRAM CA12063
HENGST E1538L
KNECHT-MAHLE LX4573
MANN+HUMMEL C35015
PURFLUX A3016
TECNOCAR A2674
UFI 30.C74.00

S 3D16 A



MITSUBISHI: Eclipse Cross - Outlander III

MITSUBISHI 1500A537
FRAM CA11896
HENGST E1441L
KNECHT-MAHLE LX4264
MANN+HUMMEL C31038
PURFLUX A1724
UFI 30.D16.00

S 3D23 A



BMW: 1 (F20) - 1 (F21) - 2 (F22) - 2 (F23) - 3 (F30) - 3 (F31) - 3 (F34) - 4 (F32) - 4 (F33) - 4 (F36)

BMW 13718605164
BOSCH S0270, F026400270
COOPERSFIAAM PA7415
FRAM CA12142
HENGST E1345L
KNECHT-MAHLE LX3320
MANN+HUMMEL C27045
PURFLUX A1811
TECNOCAR A2587
UFI 30.D23.00

AIR FILTERS

SOFIMA REF

MAIN APPLICATIONS

MAIN CROSS REFERENCES

S 3D33 A



BMW: 2 Coupè - 3 - 3 Touring - 4 Coupè - 4 Cabrio - 4 Gran Coupè - Z4
TOYOTA: Supra GR

BMW 13718580428
TOYOTA 17801-WAA02
BOSCH S0709, F026400709
COOPERSFIAAM PA7901
FRAM CA12630
HENGST E1778L
KNECHT-MAHLE LX3985/3
MANN+HUMMEL C28054
PURFLUX A3029
TECNOCAR A2687
UFI 30.D33.00

S 3D42 A



SUZUKI: SX4 S-Cross - Vitara

SUZUKI 13780-62M00, 13780-62M00-000
COOPERSFIAAM PA7824
FRAM CA11886
HENGST E1357L
KNECHT-MAHLE LX3901
PURFLUX A1721
TECNOCAR A2550
UFI 30.D42.00

S 3D43 A



BMW: 5 - X3 - X4 - X5

BMW 13718570043
BOSCH F026400459, S0459
COOPERSFIAAM PA7829
FRAM CA11914
HENGST E1171L
KNECHT-MAHLE LX4084
MANN+HUMMEL C34120
PURFLUX A1739
TECNOCAR A2555
UFI 30.D43.00

AIR FILTERS

SOFIMA REF

MAIN APPLICATIONS

MAIN CROSS REFERENCES

S 3D54 A



CHRYSLER: Grand Voyager - Sebring
Convertible
DODGE: Avenger

CHRYSLER 04891791AA
FIAT K04891791AA
BOSCH S9194, 1987429194
KNECHT-MAHLE LX1288
UFI 30.D54.00

S 3D55 A



CHRYSLER: Sebring - Sebring Convertible
LANCIA: Flavia

CHRYSLER 04891926AA, 4891926AA
FIAT K04891926AA, K04891926AB
BOSCH S0518, S9194, 1987429194,
F026400518
KNECHT-MAHLE LX1288
UFI 30.D55.00

S 3D56 A



VOLVO: S60 - S80 - V70 - V70XC - XC70

VOLVO 8649788
BOSCH 0986626847, F026400264, S0264
COOPERSFIAAM PA7326
FRAM CA8979
HENGST E1189L
KNECHT-MAHLE LX938
MANN+HUMMEL C30189/1
PURFLUX A1053
TECNOCAR A413
UFI 30.D56.00

AIR FILTERS

SOFIMA REF

MAIN APPLICATIONS

MAIN CROSS REFERENCES

S 3D57 A



HYUNDAI: Santa Fe
KIA: Sorento

HYUNDAI 28113L5100
MANN+HUMMEL C25129
UFI 30.D57.00

S 3D65 A



OPEL: Insignia A - Insignia A Country Tourer
VAUXHALL: Insignia - Insignia Sports Tourer

GENERAL MOTORS 20972655
OPEL (GM) 835196
BOSCH S0500, F026400500
HENGST E1348L
UFI 30.D65.00

S 3D66 A



BMW: 5 (G30) - 5 (G31) - 6 (G32) - 7 (G11) - 7 (G12) - 8 (G14) - 8 (G15) - 8 (G16) - X3 (G01) - X4 (G02) - X5 (G05) - X6 (G06) - X7 (G07)

BMW 13718577170, 13718691835
BOSCH F026400615, S0615
COOPERSFIAAM PA7875
FRAM CA12487
HENGST E1346L
KNECHT-MAHLE LX4635, LX4636
MANN+HUMMEL C28037
PURFLUX A1867
TECNOCAR A2654
UFI 30.D66.00

AIR FILTERS

SOFIMA REF

MAIN APPLICATIONS

MAIN CROSS REFERENCES

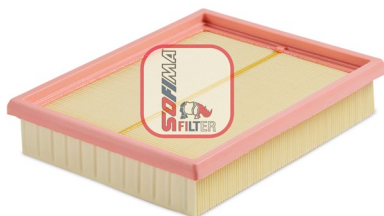
S 3D67 A



RENAULT: Arkana - Captur II - Clio V

RENAULT 165468957R
BOSCH F026400705, S0705
HENGST E2182L
KNECHT-MAHLE LX5595
UFI 30.D67.00

S 3D68 A



MG: ZS

MG MOTORS 10355807
UFI 30.D68.00

S 3D83 A



FORD: Transit MY.2014

FORD 1822004, 1827413, 1881895, 1945831,
BK319601AA, BK319601AB, BK319601AC,
BK319601AD
KNECHT-MAHLE LX575
MANN+HUMMEL C9007
UFI 30.D83.00

AIR FILTERS

SOFIMA REF

MAIN APPLICATIONS

MAIN CROSS REFERENCES

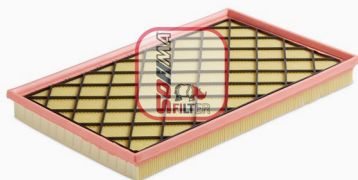
S 3D84 A



FORD: Transit MY.2014

FORD 2012001, 2240193, GK319601AA,
GK319601AB
BOSCH F026400671, S0671
COOPERSFIAAM PA7857
FRAM CA12613
HENGST E1447L
KNECHT-MAHLE LX935/3
MANN+HUMMEL C28050
PURFLUX A1992
TECNOCAR A2637
UFI 30.D84.00

S 3D85 A



MAXUS (SAIC GROUP): Deliver 9

MAXUS (SAIC GROUP) 100000059734,
C00176668
UFI 30.D85.00

S 3D89 A



JEEP: Wrangler (JK)

CHRYSLER 053034018AD, 053034018AE,
53034018AE, 68257791AA
FIAT K53034018AD, K53034018AE,
K68257791AA, K68257791AB
UFI 30.D89.00

AIR FILTERS

SOFIMA REF

MAIN APPLICATIONS

MAIN CROSS REFERENCES

S 3D90 A



FORD: Galaxy III - Kuga III - S-Max II

FORD 2368605, LX61-9601-FC
HENGST E2183L
KNECHT-MAHLE LX5598
MANN+HUMMEL C20016
UFI 30.D90.00

S 3D91 A



CRYSLER: Grand Voyager (RT)
LANCIA: Voyager

CHRYSLER 04593880AA, 4593880AA
FIAT K04593880AA
BOSCH 1987429194, S9194
COOPERSFIAAM PA7955
FRAM CA12587
KNECHT-MAHLE LX1288
PURFLUX A3074
TECNOCAR A2733
UFI 30.D91.00

S 3D92 A



FORD: C-Max II - Mondeo V

FORD 5205608, DG939601AE
COOPERSFIAAM PA7922
FRAM CA12649
MANN+HUMMEL C24013
PURFLUX A3042
TECNOCAR A2700
UFI 30.D92.00

AIR FILTERS

SOFIMA REF

MAIN APPLICATIONS

MAIN CROSS REFERENCES

S 3D93 A



HONDA: CR-Z

HONDA 17220-RTW-000
BOSCH S0363, F026400363
COOPERSFIAAM PA7727
FRAM CA11041
KNECHT-MAHLE LX3462
PURFLUX A1504
TECNOCAR A2436
UFI 30.D93.00

S 3D94 A



HONDA: Insight

HONDA 17220PHM000, 17220PHM505
UFI 30.D94.00

S 3D97 A



JAGUAR: F-Pace - XE - XF
LAND ROVER: Range Rover Sport II - Range
Rover Velar

JAGUAR 0613868A, GX73-9601-BA, T4A6124
LAND ROVER LR092258
BOSCH S0089, F026400089
COOPERSFIAAM PA7886
FRAM CA12292
HENGST E1629L
KNECHT-MAHLE LX4335
MANN+HUMMEL C26042
PURFLUX A3009
TECNOCAR A2661
UFI 30.D97.00

AIR FILTERS

SOFIMA REF

MAIN APPLICATIONS

MAIN CROSS REFERENCES

S 3D98 A



JAGUAR: F-Pace (X761) - XE (X760) - XF (X260)

LAND ROVER: Range Rover Velar (L560)

JAGUAR 0613872A, GX73-9601-AA, T4A6123

LAND ROVER LR092246

BOSCH S0699, F026400699

COOPERSFIAAM PA7919

FRAM CA12291

HENGST E1667L

KNECHT-MAHLE LX4335/1

MANN+HUMMEL C26041

PURFLUX A3019

TECNOCAR A2677

UFI 30.D98.00

S 3D99 A



INFINITI: M (Y51) - Q70 (Y51)

NISSAN 165461MG0A

UFI 30.D99.00

S 7622 A



HYUNDAI: Galloper II - H100 - H150 - Maxivan

HYUNDAI 28130-44000

BOSCH F026400186, S0186

COOPERSFIAAM FL9030

FRAM CA8772

MANN+HUMMEL C14140

UFI 27.622.00

AIR FILTERS

SOFIMA REF

MAIN APPLICATIONS

MAIN CROSS REFERENCES

S 7E41A



TOYOTA: Hi-Ace

TOYOTA 17801-75010
UFI 27.E41.00

S 7E51 A



NISSAN: Patrol GR

NISSAN 16546-G9900
BOSCH 1457433786, S3786
MANN+HUMMEL C14190/1
UFI 27.E51.00

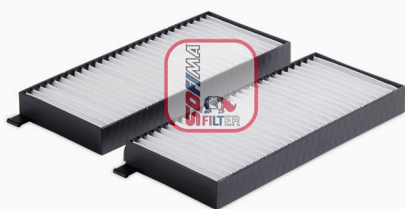
CABIN FILTERS

SOFIMA REF

MAIN APPLICATIONS

MAIN CROSS REFERENCES

S 3398 C



SSANGYONG: Actyon I - Actyon II - Actyon Sports - Kyrion

SSANGYONG 68111091A0, 6811109530
BOSCH 1987435077, M5077
COOPERSFIAAM PC8368-2
FRAM CF10840, CF11678-2
HENGST E4911LI-2
KNECHT-MAHLE LA392/S
MANN+HUMMEL CU22009-2
PURFLUX AH399-2
TECNOCAR E690-2
UFI 53.398.00

S 3418 C



VOLVO: S60 - S80 - V70 II - XC70 - XC90

VOLVO 30630753, 9204627
BOSCH 1987435061, M5061
COOPERSFIAAM PC8235
FRAM CF10129
HENGST E4901LI-R
KNECHT-MAHLE LA54/1
MANN+HUMMEL CU2855/1
TECNOCAR E455
UFI 53.418.00

S 3570 C



SUZUKI: Kizashi

SUZUKI 9586157L00, 9586157L10
HENGST E3998LI
MANN+HUMMEL CU24001, CU24008
UFI 53.570.00

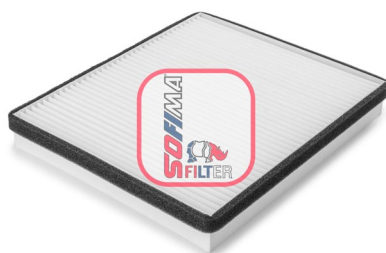
CABIN FILTERS

SOFIMA REF

MAIN APPLICATIONS

MAIN CROSS REFERENCES

S 3573 C



LADA (VAZ): 110 - 112 - Priora - Vega

LADA (VAZ) 21110812202000,
21110812202001, 21110812202082,
21118122020

COOPERSFIAAM PC8358

FRAM CF11640

PURFLUX AH389

TECNOCAR E680

UFI 53.573.00

S 3584 C



MERCEDES BENZ: Maybach III - S Classe
(W/C/V223)

MERCEDES BENZ 2238301400,
A2238301400

HENGST E6963LI

MANN+HUMMEL CU25025

UFI 53.584.00

S 3587 C



CITROËN: C4 III - C4 X

DS AUTOMOBILES: DS 3 Crossback

OPEL: Corsa F - Mokka B

PEUGEOT: 208 II - 208 II

VAUXHALL: Corsa Mk5 - Mokka Mk2

PEUGEOT 9833350880

BOSCH M5149, 1987435149

COOPERSFIAAM PC8566-2

FRAM CF12576-2

HENGST E6902LI-2

MANN+HUMMEL CU26025-2

PURFLUX AH725-2

TECNOCAR E820-2

UFI 53.587.00

CABIN FILTERS

SOFIMA REF

MAIN APPLICATIONS

MAIN CROSS REFERENCES

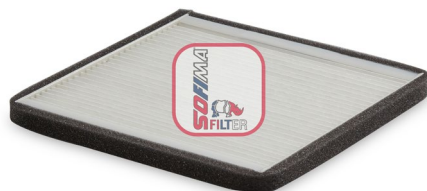
S 3588 C



KIA: Optima (JF)

HYUNDAI 97133-D4000
KIA 97133-D4000, S97133D4000
COOPERSFIAAM PC8490
FRAM CF12217
HENGST E5969LI
PURFLUX AH532
TECNOCAR E755
UFI 53.588.00

S 3592 C



MITSUBISHI-FUSO: Canter IX

MITSUBISHI-FUSO MK583342
UFI 53.592.00

S 4388 CA



INFINITI: QX50
NISSAN: Juke

NISSAN 272775FA0P, 272775NA1A
COOPERSFIAAM PCK8374
FRAM CFA11706
MANN+HUMMEL CUK22011
PURFLUX AHC405
TECNOCAR EC696
UFI 54.388.00

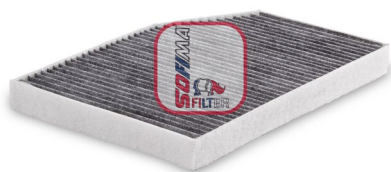
CABIN FILTERS

SOFIMA REF

MAIN APPLICATIONS

MAIN CROSS REFERENCES

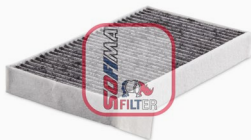
S 4393 CA



BMW: 2 (G42) - 3 (G20) - 3 (G21) - 3 (G80) - 4 (G22) - 4 (G23) - 4 (G26) - 4 (G82) - iX3 (G08) - X3 (G01) - X4 (G02) - Z4 (G29)
TOYOTA: Supra GR

BMW 64119382885, 64119382886
TOYOTA 87139WAA01, 87139WAA02
BOSCH R5604, 1987435604
COOPERSFIAAM PCK8570
FRAM CFA12553
HENGST E4980LC
KNECHT-MAHLE LAK1398
MANN+HUMMEL CUK30007
PURFLUX AHC729
TECNOCAR EC824
UFI 54.393.00

S 4396 CA



TESLA: Model 3 - Model Y

TESLA 1107681-00-A, 1107681-00-B, 1107681-00-C
COOPERSFIAAM PCK8576-2
PURFLUX AHC736-2
TECNOCAR EC830-2
UFI 54.396.00

S 4417 CA



NISSAN: NV250 - NV400
RENAULT: Kangoo Express - Kangoo - Master

NISSAN 2789100Q0J
RENAULT 272770741R
COOPERSFIAAM PCK8217-2
FRAM CFA10534-2
PURFLUX AHC273-2
TECNOCAR EC487-2
UFI 54.417.00

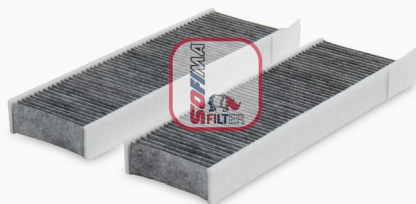
CABIN FILTERS

SOFIMA REF

MAIN APPLICATIONS

MAIN CROSS REFERENCES

S 4469 CA



CITROËN: C4 III - C4 X
DS AUTOMOBILES: DS 3 Crossback
OPEL: Corsa F - Mokka B
PEUGEOT: 2008 II - 208 II
VAUXHALL: Corsa Mk5 - Mokka Mk2

PEUGEOT 9833351080
BOSCH 1987435608, R5608
COOPERSFIAAM PCK8566-2
FRAM CFA12576-2
HENGST E6902LC-2
KNECHT-MAHLE LAK1256/1/S
MANN+HUMMEL CUK26025-2
PURFLUX AHC725-2
TECNOCAR EC820-2
UFI 54.469.00

S 4476 CA



BMW: iX (I20)

BMW 64119891558
MANN+HUMMEL CUK33006
UFI 54.476.00